



UNION COUNTY

CONSERVATION ENDOWMENT

Est. 2016



CONTACT US

Union County Conservation Board
1577 Creamery Road
Afton, IA 50830
UnionCountyCon@windstream.net
(641) 347-5100

“Helping to support the development and preservation of parks, lakes, wildlife, and recreation throughout Union County, Iowa.”

FundIowaConservation.org

DONATION FORM

Thank you for your support of the Union County Conservation Endowment Fund. It is because of the generosity of individuals like you that we are able to create an everlasting fund to help promote conservation and outdoor recreation throughout Union County.

MAKE CHECK PAYABLE TO:

Union County Conservation Endowment

MAIL CHECK TO:

South Central Iowa Community Foundation
108 North Grand, Chariton, IA 50049

QUESTIONS?

Contact us at: (641) 347-5100 or
UnionCountyCon@windstream.net

FULL NAME: _____

MAILING ADDRESS: _____

CITY: _____ STATE: _____ ZIP: _____

EMAIL: _____

GOLD Founder
\$1,000

SILVER Founder
\$500

BRONZE Founder
\$250

PLATINUM Founder
\$100

OTHER AMOUNT
\$ _____



OUR UCCE MISSION STATEMENT

Our Mission is to improve the quality of life in Union County Iowa, by supporting the development and preservation of outdoor spaces, including parks, lakes, wildlife refuges, and habitats which provide for such activities as boating, fishing, hunting, hiking, bird watching, and camping.



www.FundIowaConservation.org

OUR CURRENT GOAL RAISE \$5,000 BY JUNE 1, 2017

The UCCE has recently applied for a matching grant through the SCICF. If we can raise \$5,000, the SCICF will match our donations dollar for dollar, for a total of \$10,000 toward the endowment.

ABOUT THE ENDOWMENT

HOW DOES IT WORK?

Endowments are designed to last into perpetuity. The UCCE donations are managed and carefully invested by the SCICF. Once invested, a portion (5% of the three-year average market value) of the yearly earned interest can be used for qualifying projects in Union County. The remaining portion of the earned interest and the principle will not be used, which guarantees that the endowment will forever continue to grow and have a positive impact on the quality of life in Union County, Iowa.

WHY IS FUNDING IMPORTANT?

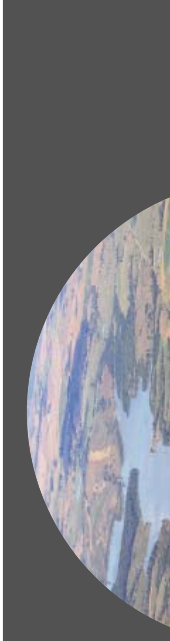
We believe conservation and outdoor recreation are very important to the quality of life in Union County. Not only do residents get to enjoy the natural resources that lie within the county, but thousands of vacationers choose this area to come to every year. We believe that promoting and preserving conservation and outdoor recreation in Union County will continue to make this county a destination area for years to come.

HOW DO I MAKE A DONATION?

There are two ways to donate:

1. Go online to www.SCICF.org and follow the Donate link. From the Union County Endowments drop-down menu, select 'Union County Conservation Endowment. Click 'Donate' to pay via credit card or Pay Pal.
2. Complete the back of this form and mail your check to the South Central Iowa Community Foundation at the address listed.

WHAT IS THE UCCE?



www.FundIowaConservation.org

OUR CURRENT GOAL RAISE \$5,000 BY JUNE 1, 2017

The UCCE has recently applied for a matching grant through the SCICF. If we can raise \$5,000, the SCICF will match our donations dollar for dollar, for a total of \$10,000 toward the endowment.

WHAT DOES MY DONATION SUPPORT?

The Union County Conservation Endowment (UCCE) was established in 2016 as an affiliate of the South Central Iowa Community Foundation (SCICF). The UCCE is a conduit for residents, businesses, stakeholders, customers, and like-minded individuals to donate funds for the betterment of conservation and outdoor recreation projects in Union County.

Union County is unique in that it features over 6,500 acres of **public land** managed by the City, County, or State. Special projects and required maintenance related to the thousands of acres of lakes, parks, wildlife refuges, and publicly-owned woodland and prairie are directly funded by your generous donations.

LAKES & PARKS

Three Mile Lake Recreational Area |
Twelve Mile Lake | Green Valley State
Park | Summit Lake | Thayer Lake |
McKinley Lake | Atton Lake | Mitchell
Marsh | Groesbeck Wildlife Area |
Talmage Hill Wildlife Area

ACTIVITIES

Fishing | Boating | Swimming | Cabin
Rentals | Camping | Hiking | Hunting |
Disc Golf | Trap and Rifle Shooting at
High Lakes Outdoor Alliance
Shooting Range | Canoeing and
Kayaking

FACILITIES

Recreational Areas | Lodges | Beach
Shelters | Camp Sites | Cabins |
Shelter Houses | Playgrounds |
Walking Trails | Shooting Range |
Shower Houses | Fish Cleaning
Stations | Public Restrooms