

Camping & Cabins

Camping is a popular activity at Pinicon Ridge County Park. Campgrounds are open as ground conditions permit. The park offers campsites that range from primitive to modern sites with electricity and water. Campsites are equipped with a fire ring and picnic table with showers and restrooms nearby. Family campgrounds, such as Flying Squirrel and Plains are available on a first-come, first-serve basis. Campers self-register in each individual campground and pay the required fee. A dumping station is available. Firewood and ice are available from the campground hosts.



Camping Cabins to Reserve

Four log cabins available for overnight camping. Pintail cabin has 2-bedrooms. Bobwhite and Aspen cabins are 1-room living area with restrooms. River Otter Cabin is a 1-room cabin with an outdoor restroom nearby. Pintail sleeps up to 8 people, all others sleep up to 6. All cabins have heat and air conditioning. Can be reserved April 15 to October 15.

Trails



Woodpecker Hill Trail

Parking is located at the top of Woodpecker Hill. 1.69 miles in length, it takes about 45 minutes to walk. The trail features a unique limestone outcropping located in the valley of the forest and a small water cascade known locally as Horseshoe Falls.

White Oak Trail

The trailhead is located near the river just past the boat ramp. The trail uses the group camp road for a short distance and connects the group campgrounds with the day use part of the park. The trail is approximately 1.85 miles long and takes approximately 2 hours to walk. The trail traverses heavily wooded hills and valleys.

Bobwhite Trail

This almost 2 mile upland trail will take you through areas of restored prairies. Enjoy the beautiful views while you utilize this scenic trail.

	# of Campsites	Electricity 10, 20, 50 amp	Pressurized Water	Shower Nearby	Playground Nearby
Family Campgrounds					
Flying Squirrel Loop A	41	x	x	x	x
Flying Squirrel Loop B	28	x	x	x	x
Flying Squirrel Loop C (electric)	7	x	x	x	x
Flying Squirrel Loop C (non-elec)	7		x	x	x
Plains (electric)	19	x	x		
Plains (non-electric)	17		x		
Group Campgrounds					
Group Camp 1 & 2	8	x			
Group Camp 3, 4, 5, 6, 7	15				

Group Campgrounds

There are 7 group campgrounds available by reservation online. The group camps are designed for use by groups larger than 6 people and 3 camping units or more.

Flying Squirrel Trail

The trailhead for Flying Squirrel Trail is on Valley Farm Rd 1 mile west of Hwy 13. This trail includes stands of mixed pines and a splendid view of the river. It is 2.69 miles in length, has some hills and takes about 2 hours to walk. This area is open to hunting during the hunting season.



Whip-Poor-Will Paved Trail

This 1.9-mile multi-use paved trail connects Pinicon Ridge Park to Central City. Parking is available in the lot near the watercraft concession building. This trail connects the day use side of the park to the campground and crosses the Mary Lundby Bridge.

Park Features & Information

Pinicon Ridge Park has long been admired for its scenic natural beauty. The hilly, heavily wooded area, divided by the Wapsipinicon River, is home to deer, squirrels, wild turkey, rabbits, songbirds and many other species of wildlife. The Linn County Conservation Board began acquiring property at Pinicon Ridge in 1960. Over the years, the park has expanded to 965 acres. There are two entrances to the park. Camping and cabins on the north side. Day use activities, group campgrounds and lodges on the south side of the Wapsipinicon River.

Alexander Wildlife Area

View American elk and white-tailed deer.



Observation Tower

Located on Woodpecker Hill, the tower's observation platform is 65 feet above ground, making it one of the highest points in Linn County. This facility provides a picturesque overlook of the park and Wapsipinicon River valley.



Mary Lundby Bridge

This 520 foot pedestrian bridge spans the Wapsipinicon River connecting visitors to both sides of the park. Has a memorial overlook of the river with historic markers.

Watercraft Concession & Canoe Trips

The boat rental is open from May until September, weather and river conditions permitting. Equipment to rent includes canoes, paddleboats and kayaks. Purchase snacks and pop here as well. This is the designated canoe/kayak access point. To book your shuttle or confirm availability, call **319-438-1961** (during season).

Reservable Lodges & Shelters

Horseshoe Falls and Woodpecker lodges are enclosed, heated and available all year. Eagle View and Riverside shelters are open-air and may be reserved during the park season. Reserve online at LinnCountyParks.com



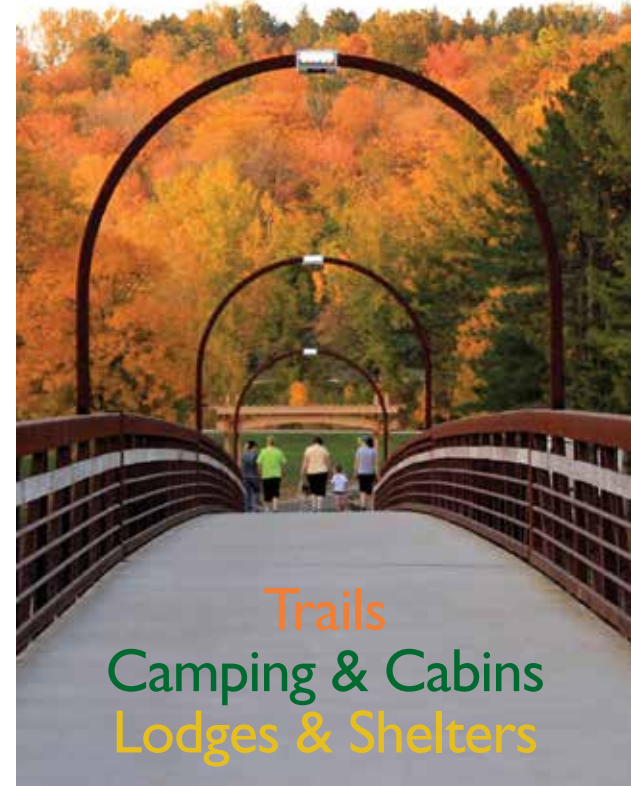
Concrete Boat Ramp

Ramp provides access to the Wapsipinicon River.

Americans with Disabilities Act

The Linn County Conservation Board intends to comply with the Americans with Disabilities Act and all other local, state and federal laws pertaining to equal treatment. If anyone believes he or she has been subject to discrimination on the basis of race, color, national origin, age or disability, they may file a complaint alleging discrimination with either the Linn County Conservation Board or the Office for Equal Opportunity, U.S. Department of the Interior, Washington, D.C. 20240.

Pinicon Ridge County Park



Trails
Camping & Cabins
Lodges & Shelters



Questions, comments or to make reservations:

(319) 892-6450

Pinicon Ridge Park office:

(319) 438-6616

Conservation@LinnCounty.org

LinnCountyParks.com

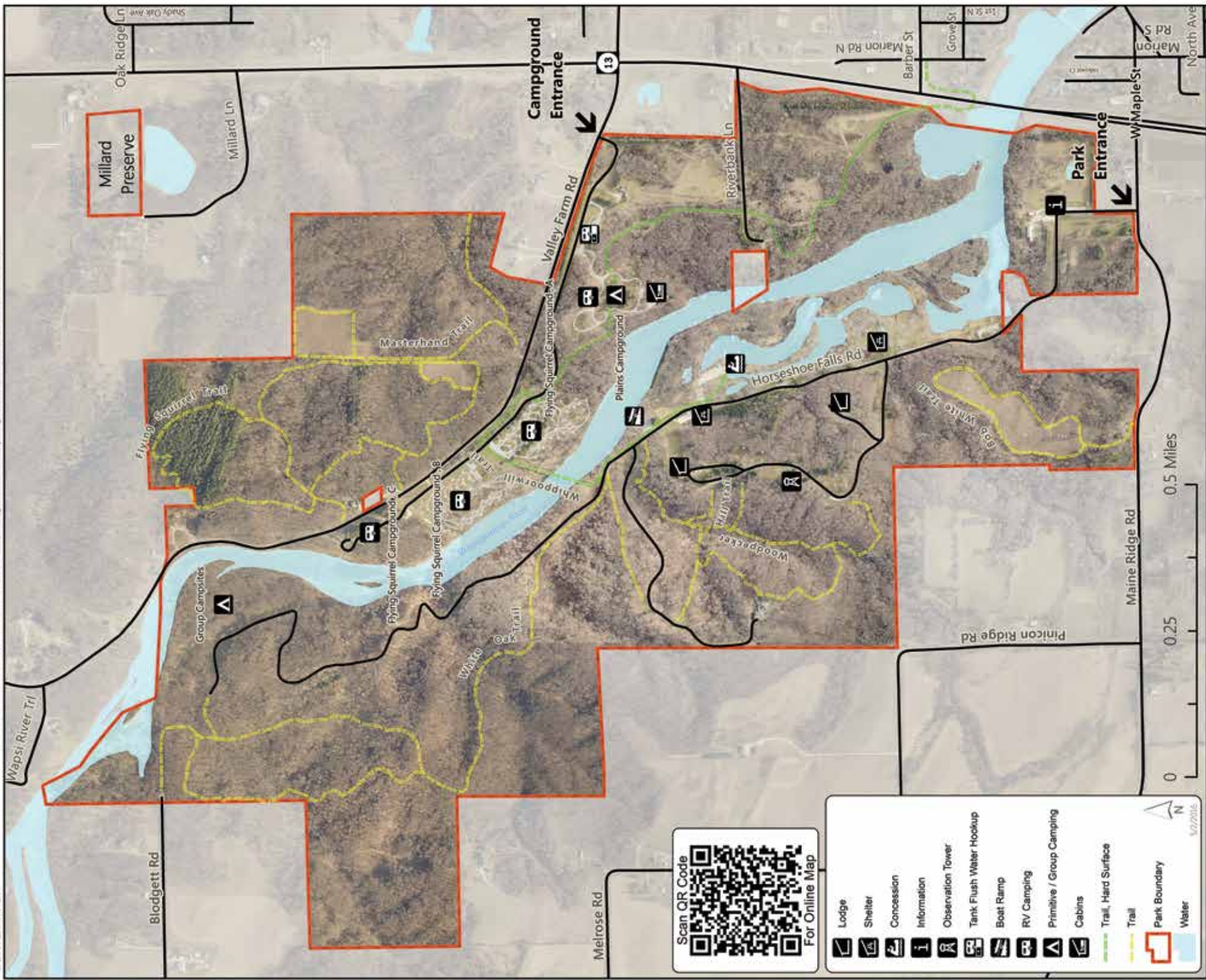
Revised February 2016



Pinicon Ridge Park

4732 Horseshoe Falls Rd, Central City, IA 52214

View online version of this map at: <https://gis.linncounty.org/webapps/conservation/explorer>



Park Information

Hours

Pinicon Ridge Park is open daily from 4:00 AM until 10:30 PM. However, roads may be closed during periods of winter/spring thaw when conditions are soft. Only registered campers are allowed in the park after 10:30 pm.

Rules

- Some park rules to remember:
- All pets must be leashed
 - Keep all vehicles on roadways
 - Do not litter; carry out your trash
 - Build fires only in designated fire rings
 - Observe speed limits
 - Park only in designated areas

Directions

Pinicon Ridge Park is located 12 miles north of Marion on Highway 13 near Central City. The campground side of the park is accessed via Valley Farm Rd. The day-use side of the park is accessed via Maine Ridge Rd. Both sides of the park are connected via the Lundby Trail Bridge.