

## Rental Rates

A) For private use, service club use, or by conservation education organizations for social engagements.

**Hours:** 10:00 A.M.-1:00 A.M.

**Rental Rates: \$150 a day OR  
\$25.00 hour - Minimum of 2 hours**

The rental payment check and damage deposit check are due within 7 days of booking the reservation. A reservation agreement will be signed and the rental policy will be reviewed and provided to the renter at this time. Any reservations not confirmed by payment within 7 days will be removed from the reservation book.

B) For Conservation/Educational organization.

Reservations as schedule allows at no charge at the discretion of the staff if a program is provided by a KCCB staff or for conservation or educational purposes. A damage deposit may be required.

## Damage Deposit

A minimum damage deposit of \$150.00 will be left with the Kossuth County Conservation Board as security against any damage caused during rental. Higher deposits may be required at the discretion of the Conservation Board. The amount of deposit in no way limits the monetary amount that the renter may be responsible for. This will be determined by the actual cost of cleanup as noted below, and /or repair of damage in materials and time (time will be charged in one hour increments at \$25/hour). Damage to any equipment or supplies of the Kossuth County Conservation Board will be included in the damage assessed to the renter.

Water's Edge Nature Center  
1010 250th Street  
Algona, Iowa 50511



# Water's Edge Nature Center

## Meeting Room Rental Information



**Water's Edge Nature Center  
1010 250th Street  
Algona, Iowa 50511**

**Office: 1-515-295-2138  
E-Mail: [kccb@awcmail.com](mailto:kccb@awcmail.com)  
Fax: 515-295-6833**



## Available Facilities

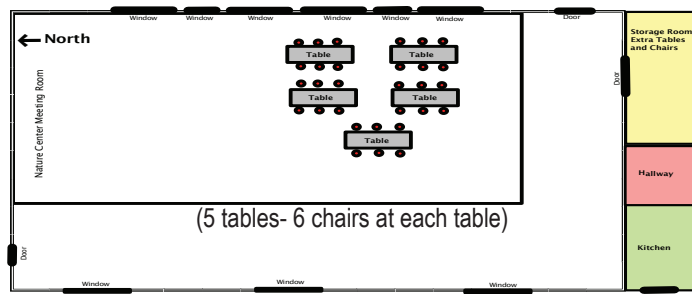
The large meeting room for rental measures 35' x 45' and seats approximately 120 people with tables and chairs. A full service kitchen is adjacent to the room and is included in the rental fee. Approximately 30 tables and 180 chairs are available to use and are included in the rental fee. Rest room facilities are located just outside the entrance door to the meeting room. A large (24' x 26') outdoor deck is also accessible from the meeting room and provides a great view of Smith Lake. Parking is available for at least 90 vehicles and the facility is fully handicapped accessible. The room capacity of the large meeting room for fire code purposes is 219 with chairs.

## Conditions of Use

The Water's Edge Nature Center may be rented by groups or individuals. Rental privileges may be revoked due to past abuses of those privileges.

Reservations for weekday dates may be made from October 1 to September 30. Weekend reservations (Friday night, Saturday or Sunday) may be made up to one year in advance. All reservations must be made at least seven days prior to the event.

Under no circumstances will any staples, pins, nails or other fasteners be placed on the wall, woodwork or deck of the nature center. All such penetrations will be charged to the renter as damage to the facility. A designated tack board is available on the west wall for placing decorations. Material for affixing items to any surface must be approved by the KCCB and no other materials will be used.



Put tables and chairs back in this order when finished with the meeting room. Extra tables and chairs are available for use and are located in the adjacent storage room.

## Renter Responsibilities

- The renter is responsible for making arrangements to pick up a key within a week of the event. The staff may not be at the door to let you in.
- Smoking is prohibited everywhere inside the Water's Edge Nature Center, on the deck and in the outdoor classroom. Smoking is allowed only in designated areas.
- Declaring whether or not alcohol will be present and making the deposit and rental payments in a timely manner.
- Return one copy of the rental agreement with your payment.
- Make sure that the guests follow parking rules.  
All motorized vehicles are allowed only on designated roadway and parking lot area.
- No nails, staples or pins may be used on any part of the Water's Edge Nature Center, in or outside. If you wish to attach decorations to any part of the building, check with staff prior to your rental.
- The renter is responsible for clean up of the facility and placing trash in the dumpster. Brooms, mops, garbage bags, paper towels etc. are available in the storage room.
- Take down all decorations, inside and outside.
- Return the tables and chairs in the meeting room to the original set-up.
- Make sure all exterior doors are locked prior to leaving the building and leave the keys on the kitchen counter.

**Call: 515-295-2138**



## Meeting Room and Kitchen

**Class Reunions**

**Graduations**

**Receptions**

**Family Reunions**

**Wedding Receptions**

**Business Meetings**

**Club Meetings**

**Birthday Parties**





## **Accessibility**

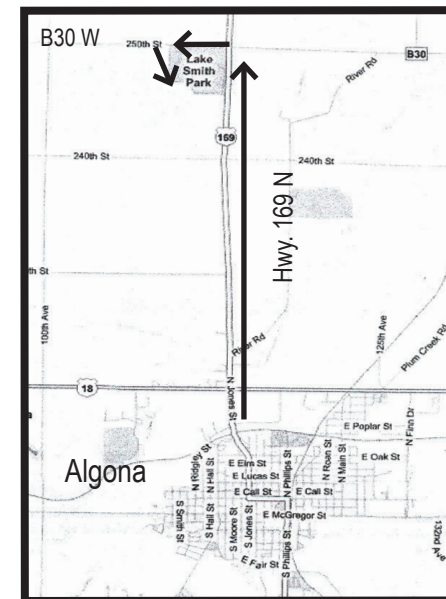
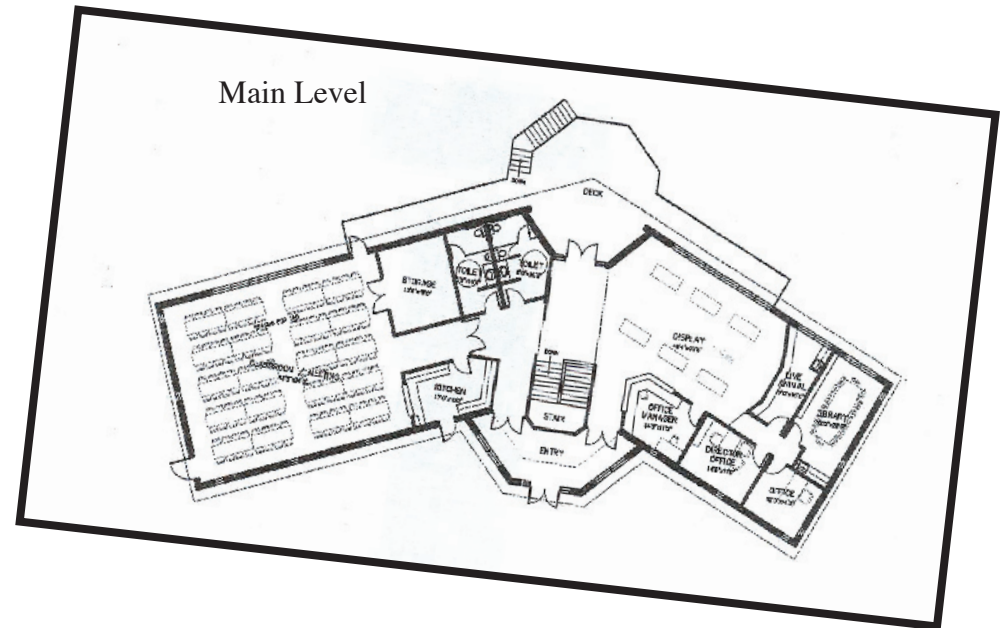
- 1) Public areas on main floor; easy navigation for handicapped and elderly.
- 2) Ample parking and convenient drive-up access.
- 3) Located on Hwy. 169, 3 miles north and then 1/4 mile west on county road B30.

## **Amenities**

- 1) Self-guided educational displays (live animals, mounted animals, and hands-on exploration) for students, families, and nature lovers.
- 2) Large meeting room has beautiful view of Smith Lake, and seats 120 people comfortably.
- 3) Meeting room equipped with a screen and A/V equipment for slide presentations.
- 4) Large meeting room for nature classroom space and public programs.
- 5) Lower level storm shelter for camper and visitor safety.
- 6) 2-wing design allows for multiple user groups and after-hours gatherings.
- 7) Large lakeside deck for wildlife viewing and social gatherings.
- 8) Abundant lakeside windows for beautiful views and natural lighting.
- 9) Amphitheater/Outdoor Classroom and dock.

## **Energy Efficiency**

- 1) Built into side hill for efficient heating and cooling.
- 2) Vaulted central foyer for natural day-lighting and passive solar heat.
- 3) Geothermal heating and cooling system.



Water's Edge Nature Center is located 3 miles N of Algona on Hwy. 169 and 1/4 mile W on B30. Entrance road to nature center is on the S side of B30.

