

# CEDAR RIVER


- Beginning to North Cedar: 7 miles
- North Cedar to Cedar Bend: 8.7 miles
- Cedar Bend to Three Rivers: 3.4 miles
- Three Rivers to Kohlmann Park: 1.2 miles
- Dam at Kohlmann Park portage to Riverside park: .6 miles
- Riverside Park to Brookwood Park 1: .4 miles
- Brookwood Park 1 to Brookwood Park 2: .75 miles
- Brookwood Park 2 to Janesville City Park: 7 miles

**Flow Rates**  
 Minimum recommended flow rate: 466 ft<sup>3</sup>/s

You may find flow rates at:  
[https://waterdata.usgs.gov/ia/nwis/current?type=flow&group\\_key=county\\_cd](https://waterdata.usgs.gov/ia/nwis/current?type=flow&group_key=county_cd)

**P**ersonal  
 Should be worn by everyone planning to be on or in the water.  
 Should be tight enough that when shoulder straps are pulled up, the PFD does not come above your ears.

**F**loatation  
 Device




Bremer County Nature Alliance  
 (319) 882-4742  
[conservation@butler-bremer.com](mailto:conservation@butler-bremer.com)












**Emergency Services:**  
 911

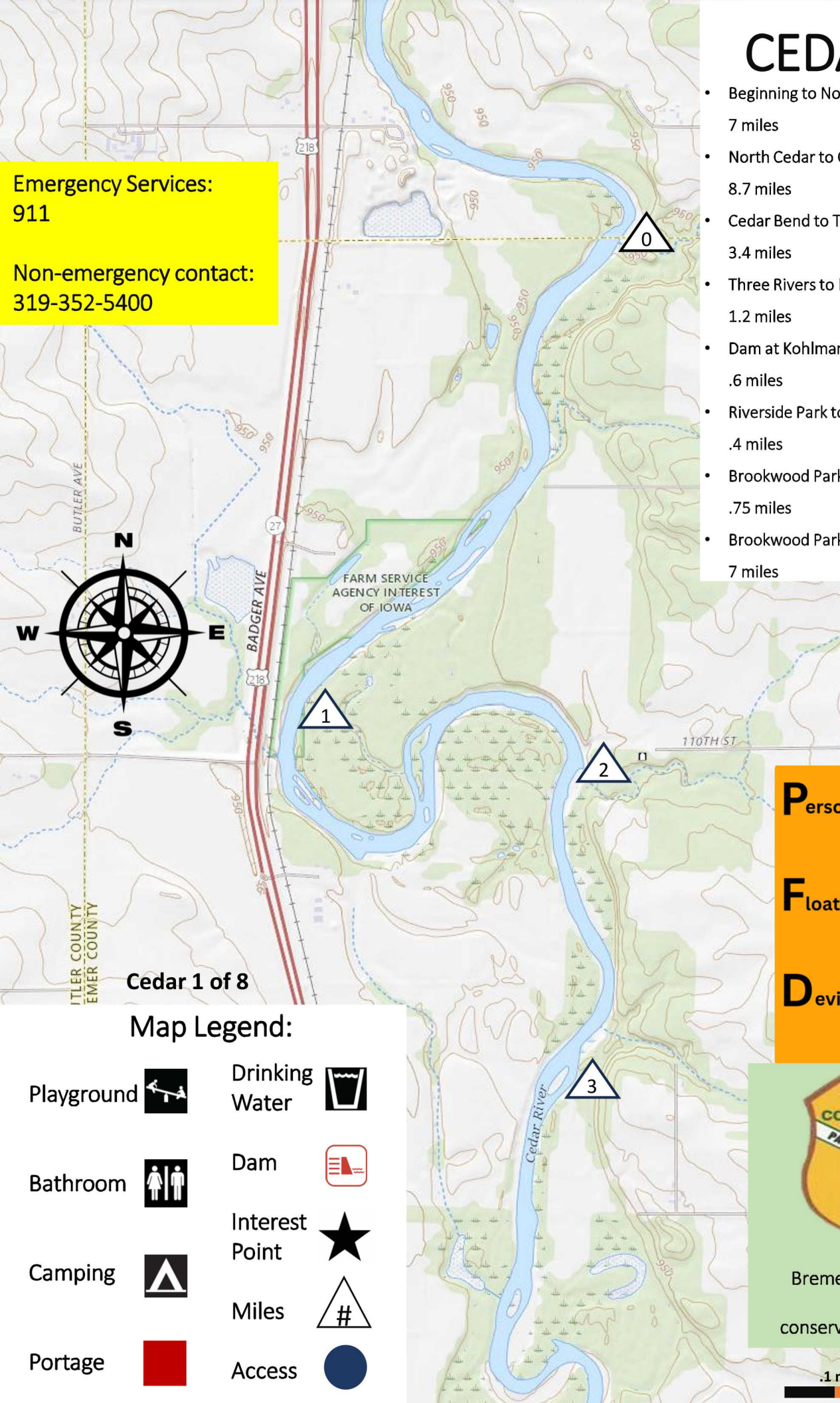
**Non-emergency contact:**  
 319-352-5400



Cedar 1 of 8

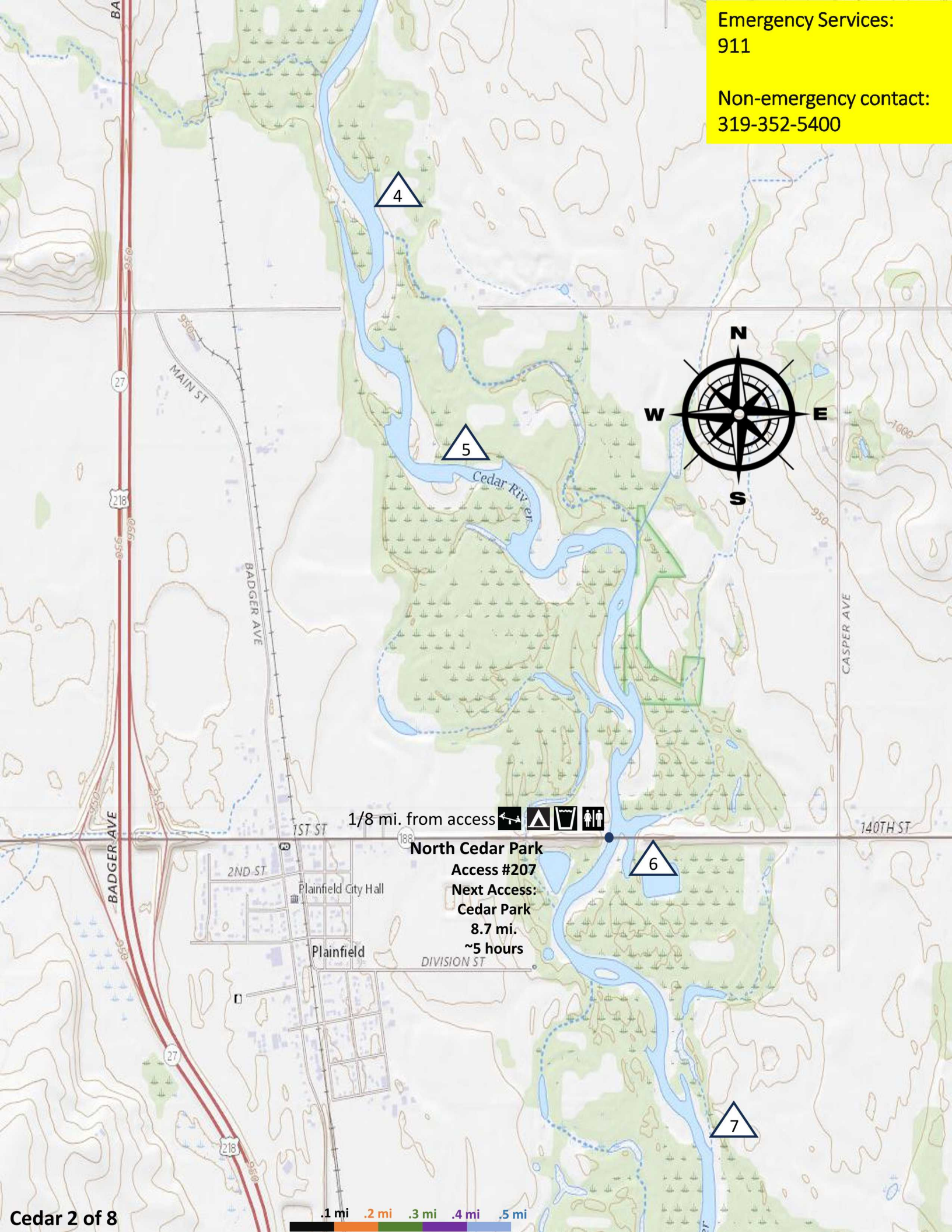
## Map Legend:

- |            |   |                |   |
|------------|---|----------------|---|
| Playground |  | Drinking Water |  |
| Bathroom   |  | Dam            |  |
| Camping    |  | Interest Point |  |
| Portage    |  | Miles          |  |
|            |   | Access         |  |



Emergency Services:  
911

Non-emergency contact:  
319-352-5400

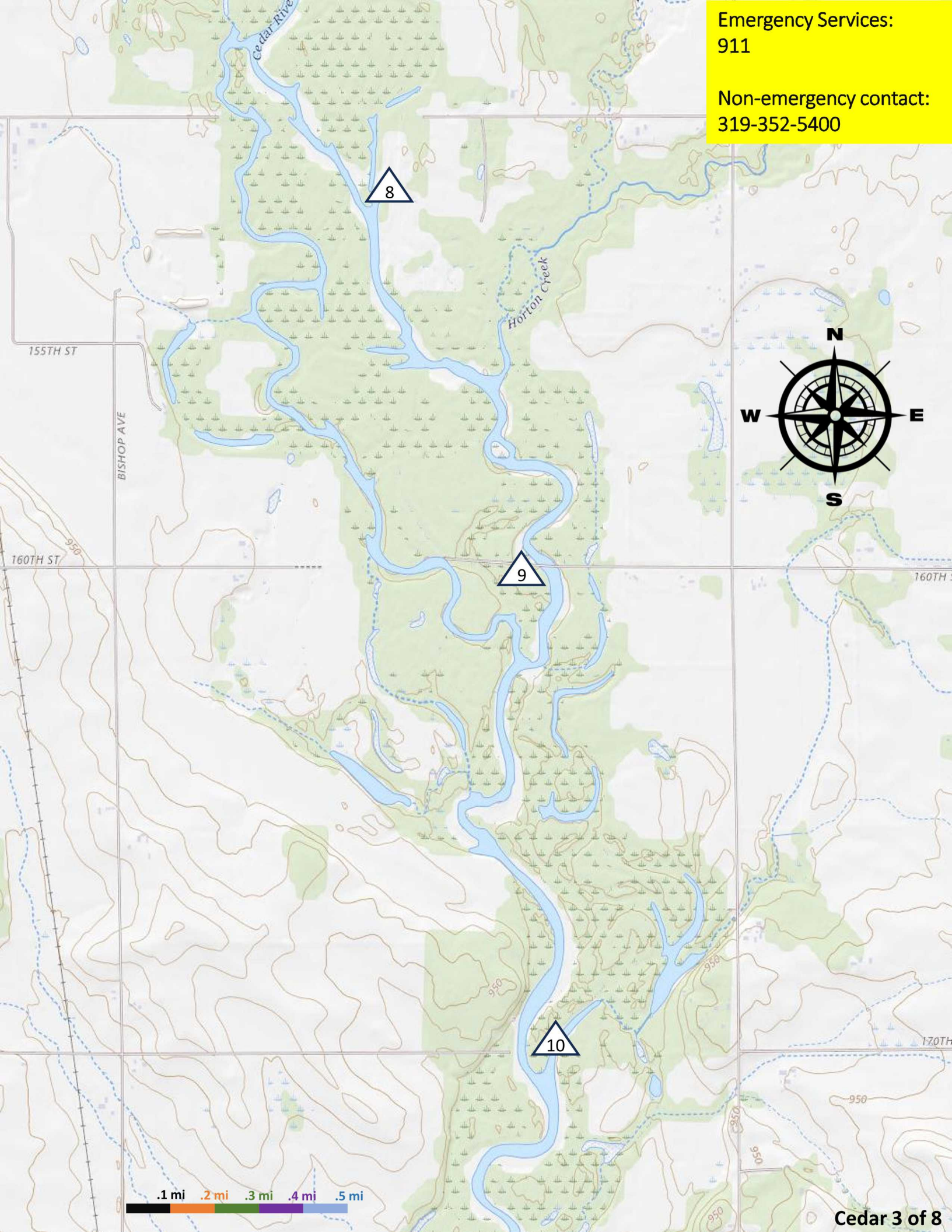


1/8 mi. from access

**North Cedar Park**  
Access #207  
Next Access:  
Cedar Park  
8.7 mi.  
~5 hours

Emergency Services:  
911

Non-emergency contact:  
319-352-5400



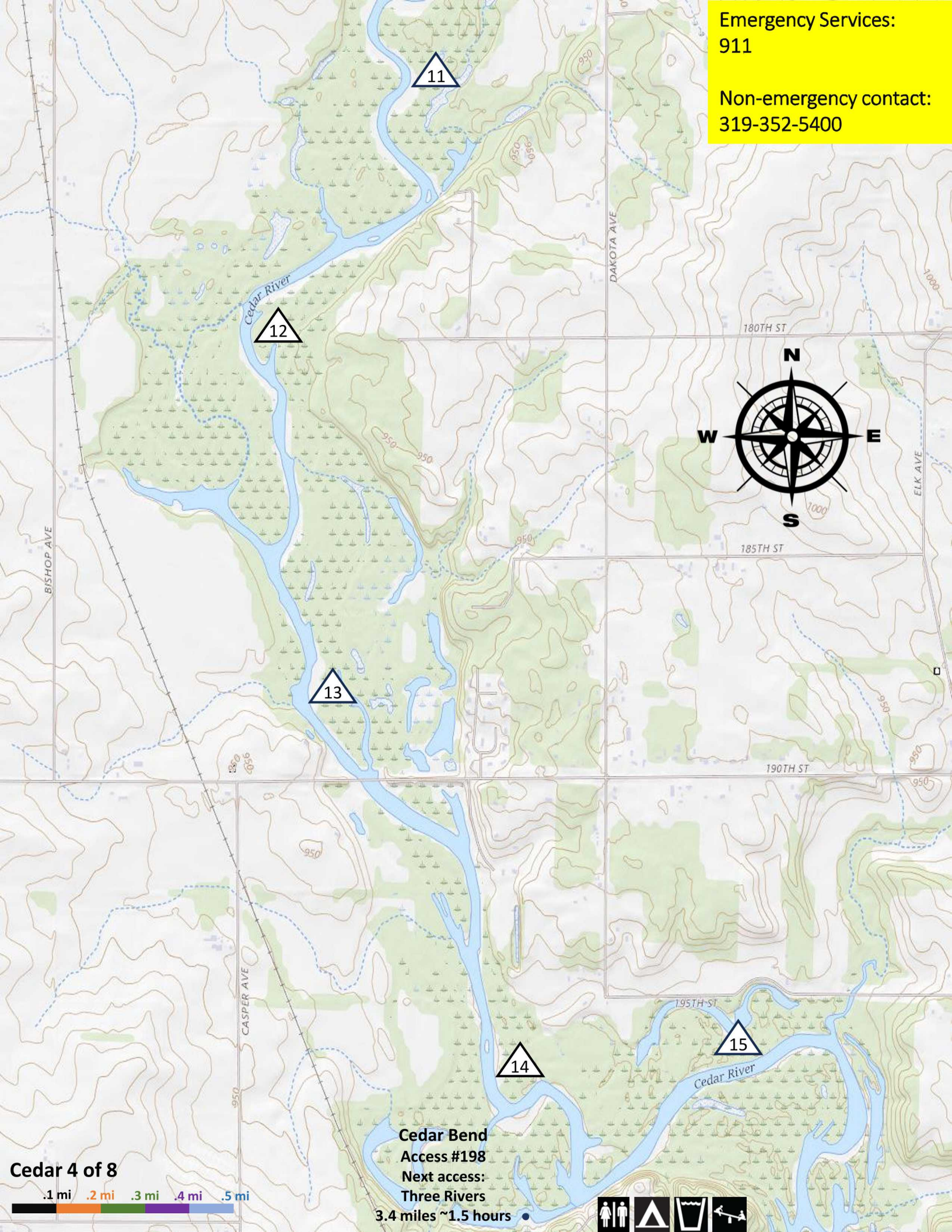
8

9

10



Emergency Services:  
911  
Non-emergency contact:  
319-352-5400



**Cedar 4 of 8**

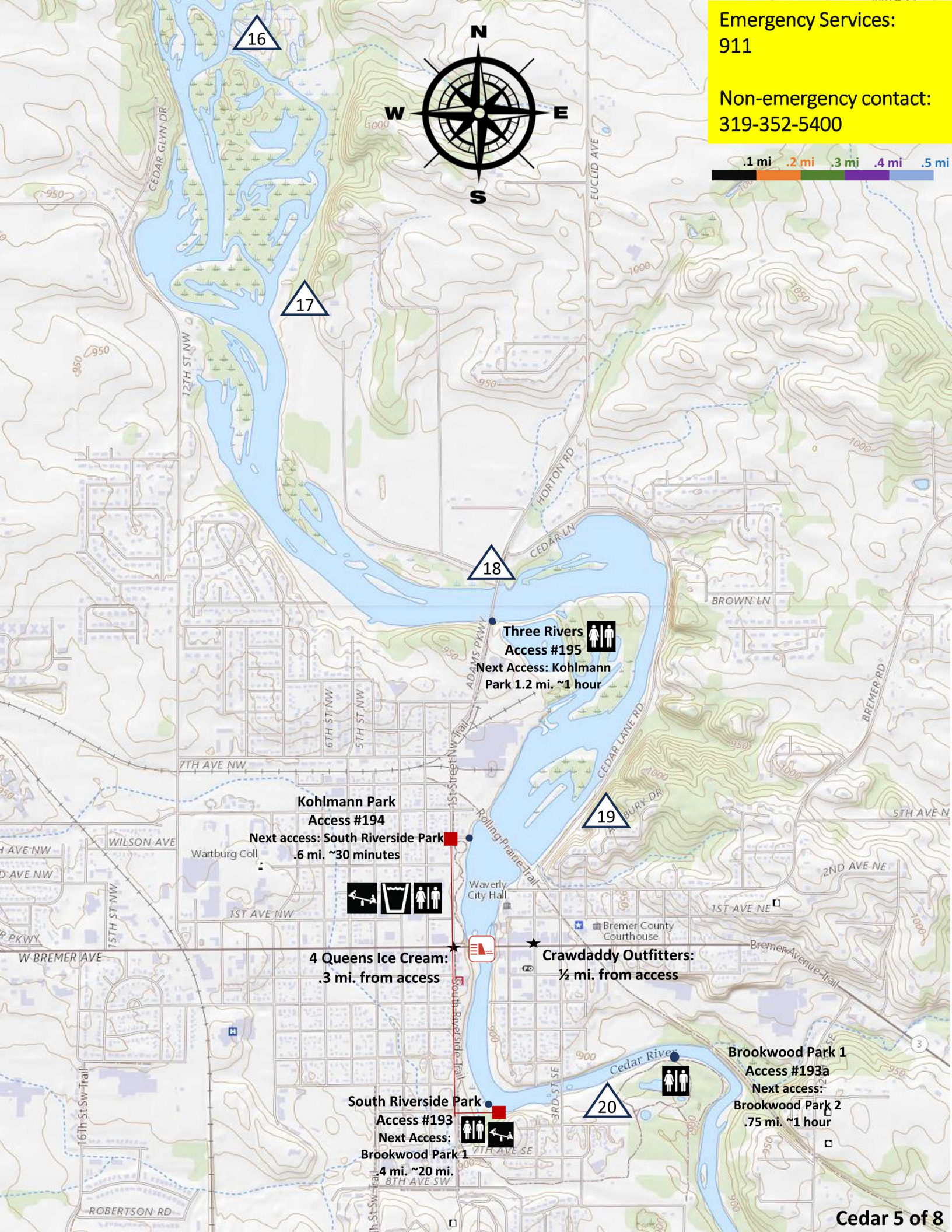


**Cedar Bend**  
**Access #198**  
**Next access:**  
**Three Rivers**  
3.4 miles ~1.5 hours



Emergency Services:  
911

Non-emergency contact:  
319-352-5400



16

17

18

19

20

**Three Rivers Access #195**  
Next Access: Kohlmann Park 1.2 mi. ~1 hour

**Kohlmann Park Access #194**  
Next access: South Riverside Park .6 mi. ~30 minutes



**4 Queens Ice Cream:**  
.3 mi. from access

**Crawdaddy Outfitters:**  
½ mi. from access

**South Riverside Park Access #193**  
Next Access: Brookwood Park 1  
4 mi. ~20 mi.



**Brookwood Park 1 Access #193a**  
Next access: Brookwood Park 2  
.75 mi. ~1 hour

CEDAR RIVER PKWY

Brookwood Park 2

Access #193b

Next access:

Janesville City Park

7 mi. ~3 hours

Emergency Services:

911

Non-emergency contact:

319-352-5400



17TH AVE SE

18TH AVE SE

30TH ST SE

30TH ST SE

11TH ST SE

GARDEN AVE

240TH ST

RAINBOW DR

GRAND AVE

FAIRVIEW AVE

FERN AVE

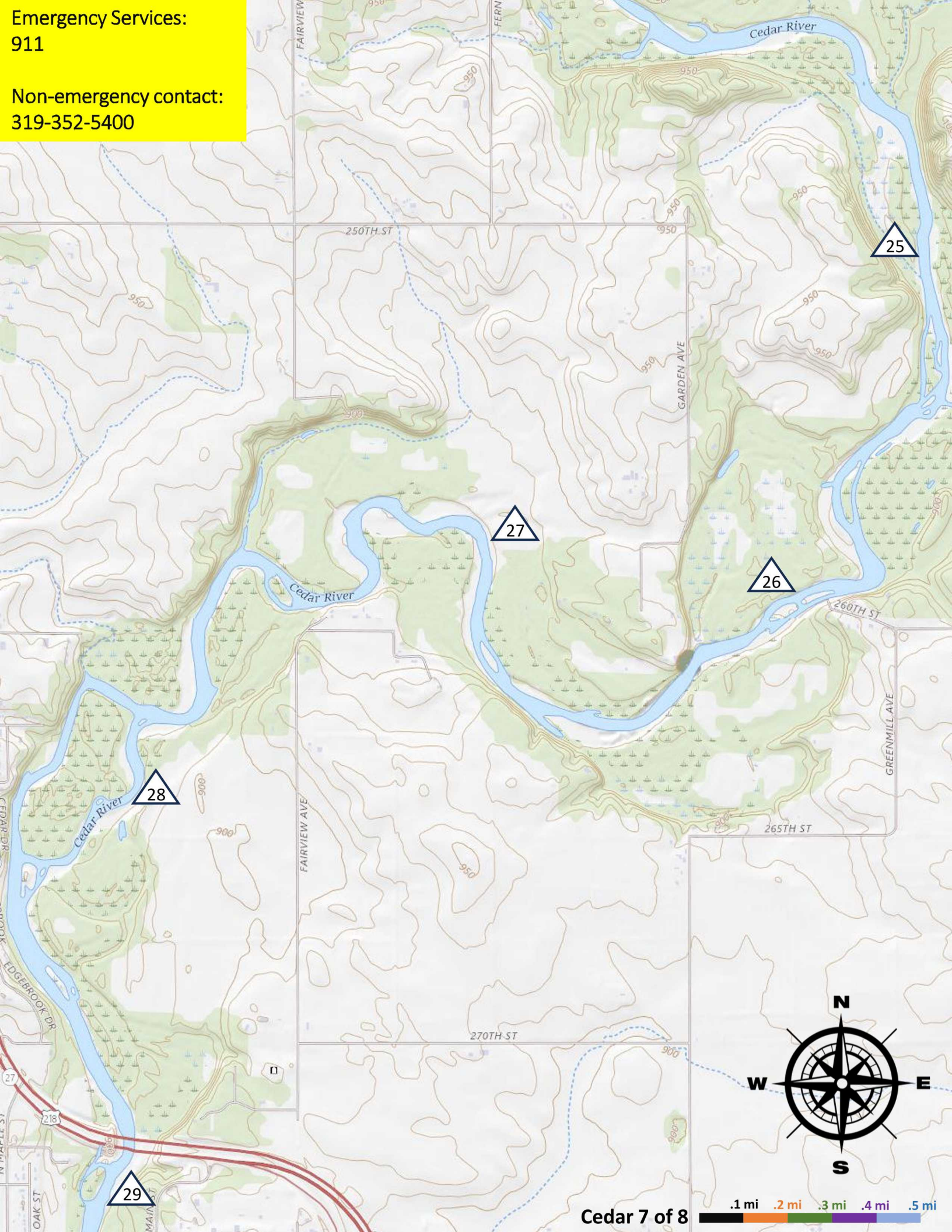
Cedar River

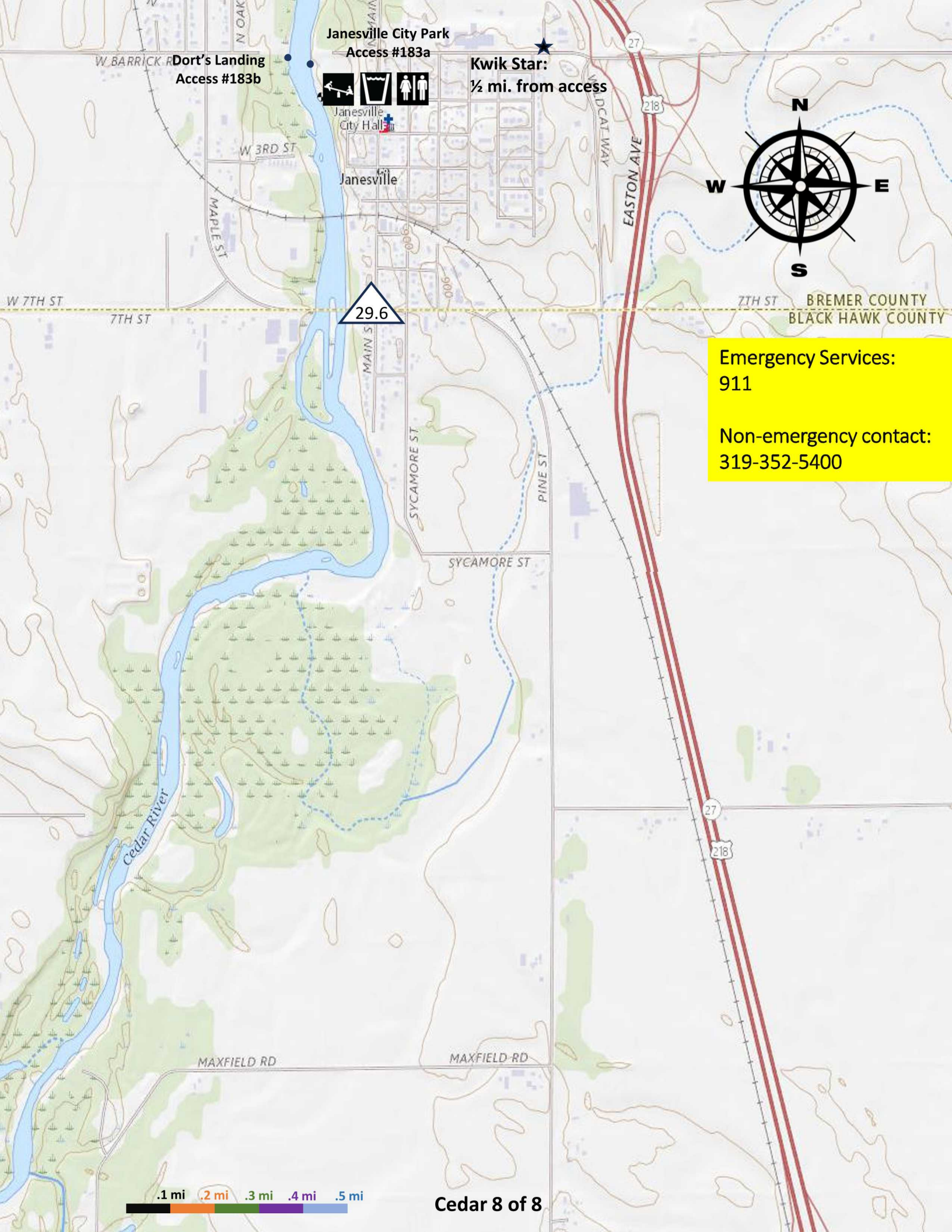
250TH ST

950

Emergency Services:  
911

Non-emergency contact:  
319-352-5400





Dort's Landing  
Access #183b

Janesville City Park  
Access #183a

Kwik Star:  
½ mi. from access



Janesville  
City Hall

29.6



Emergency Services:  
911

Non-emergency contact:  
319-352-5400

.1 mi .2 mi .3 mi .4 mi .5 mi