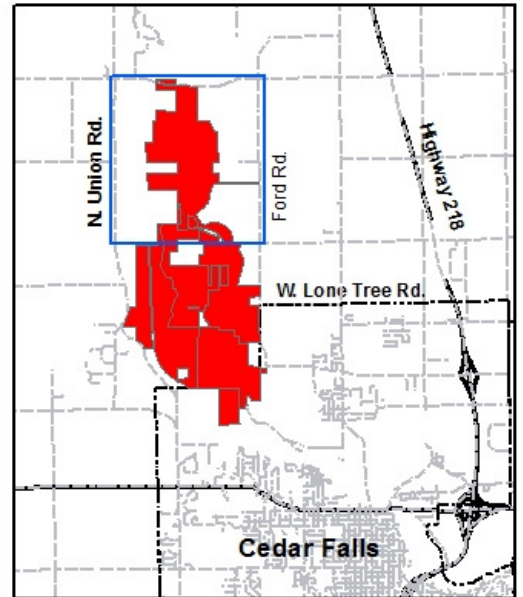
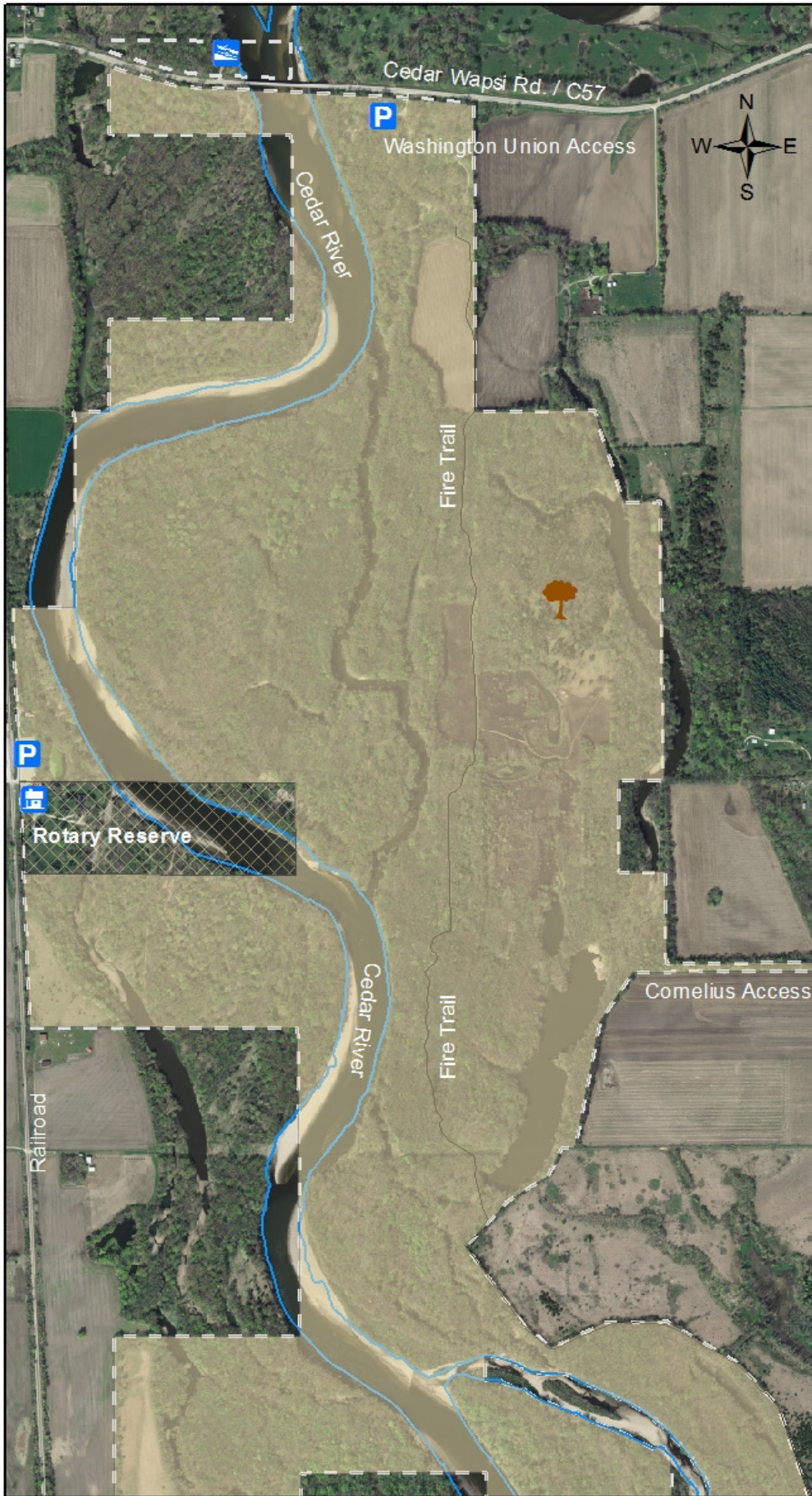










Cedar River Wildlife Area (North)

Managed by
 Black Hawk County Conservation Board
 1346 Airline Highway
 Waterloo, IA 50703
 (319) 433-PARK (7275)
www.blackhawkcountyparks.com

The county's largest wildlife area at over 1,400 acres. Prairie, floodplain forest, small wetlands and old river oxbows provide a diversity of habitat for hunting, fishing, hiking, xcountry skiing, bird watching, and exploration.



Legend

-  Cedar Bend Savanna
-  Lodge
-  Boat Ramp
-  Parking
-  Range
-  Hunting
-  No Hunting
-  Park Boundary

0 0.05 0.1 0.2 0.3 0.4 0.5 Miles

DISCLAIMER:
 This map does not represent a survey; no liability is assumed for the accuracy of the data delineated herein, either expressed or implied by Black Hawk County, the Black Hawk County Assessor, or their employees. This map is compiled from official records including plats, surveys, recorded deeds, and contracts, and only contains information required for local government purposes. See the recorded documents for more detailed legal information. 2/18/14 S. Tesch 1:13,500