



Old Highway 63
 Access #220
 Next access: Alcock Park
 2.95 mi.
 ~2 hours

Emergency Services:
 911

Non-emergency contact:
 319-352-5400

WAPSI RIVER

- Highway 63 access to Alcock Park: 2.95 miles
- Dam at Alcock Park: Portage .2 miles
- Alcock Park to Sweet Marsh: 6.9 miles
- Sweet Marsh to Snyder Access: .96 miles
- Snyder Access to Wapsi Access: 2.5 miles
- Wapsi Access to Brewer Access: 2.35 miles
- Brewer Access to Zell Access: 2.98 miles
- Zell Access to Smoketown Access: 4.11 miles
- Smoketown Access to Aldo Leopold Access: 5.94 miles
- Aldo Leopold Access to Seven Bridges: 3.09 miles

Total miles in Bremer County: 34.01

Map Legend:

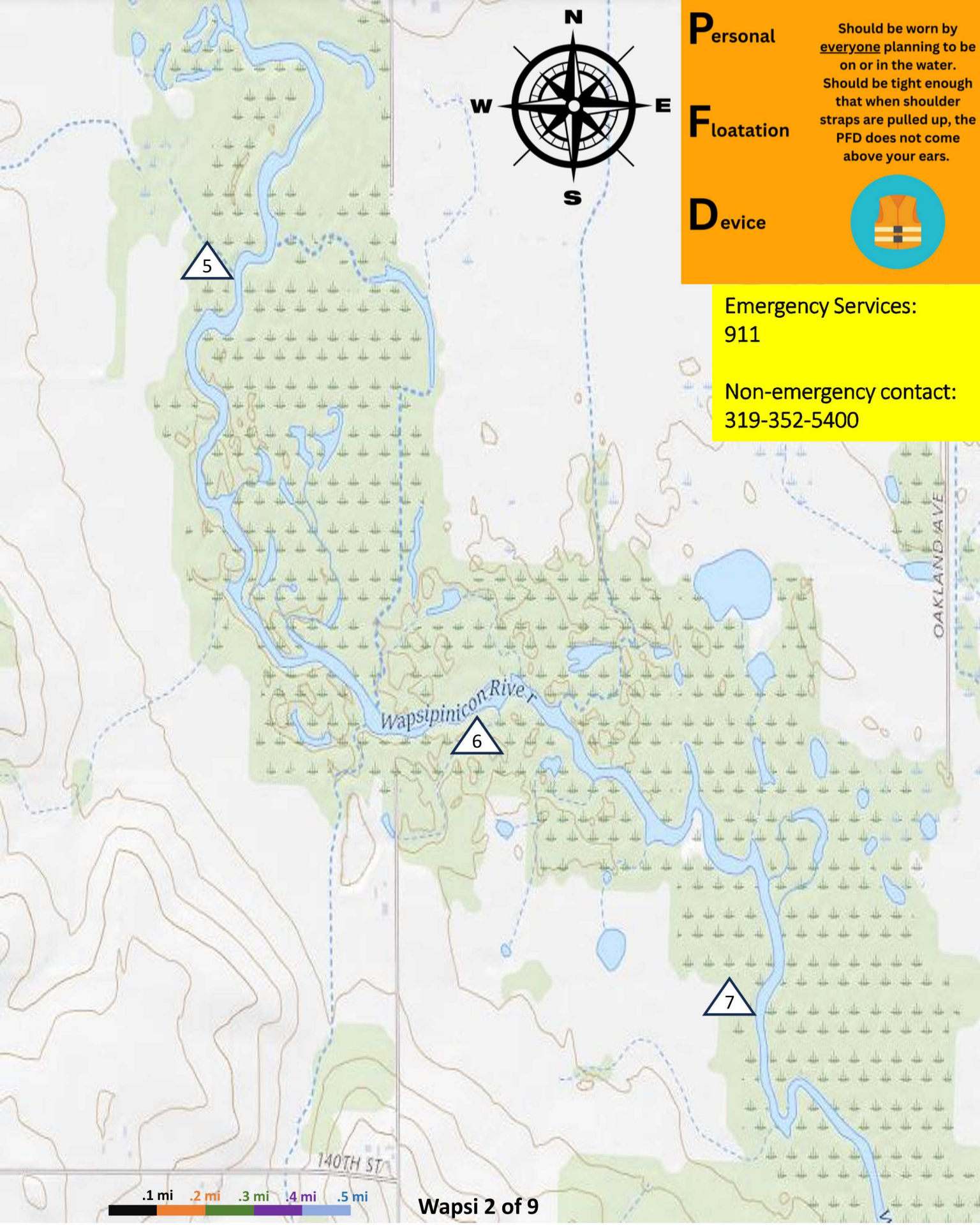
- Playground
- Bathroom
- Camping
- Portage
- Access
- Drinking Water
- Dam
- Miles

Flow Rates
 Minimum recommended flow rate:
 325 ft³/s

You may find flow rates at:
https://waterdata.usgs.gov/ia/nwis/current/type=flow&group_key=county_cd

Alcock Park
 Access #217
 Next access: Sweet Marsh
 6.9 mi. ~4 hours

Frederika
 Frederika City Hall
 ★ Frederika Locker:
 ¼ mi. from access



Personal

Should be worn by everyone planning to be on or in the water.

Floatation

Should be tight enough that when shoulder straps are pulled up, the PFD does not come above your ears.

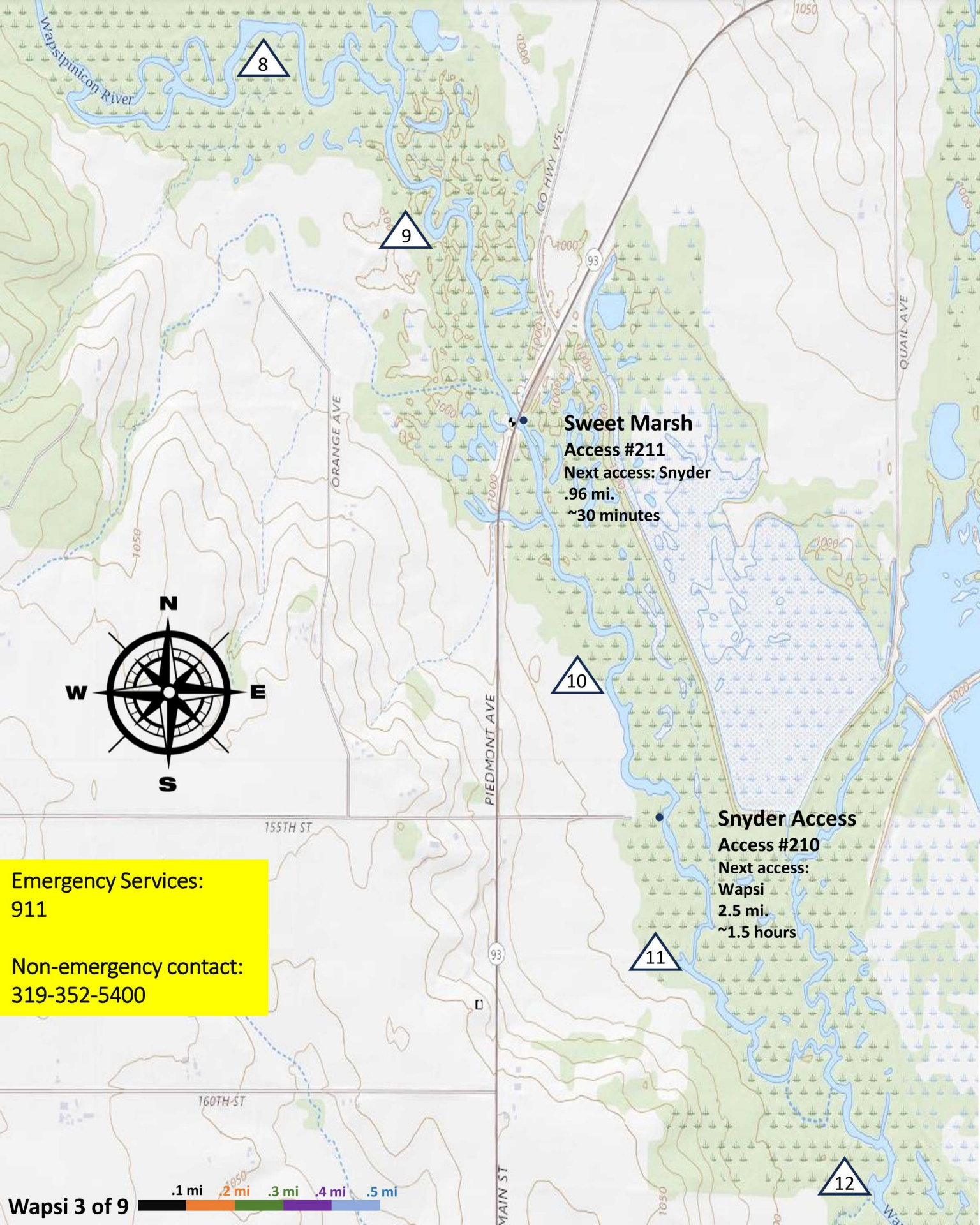
Device



Emergency Services:
911

Non-emergency contact:
319-352-5400





8

9

10

11

12

Sweet Marsh

Access #211
Next access: Snyder
.96 mi.
~30 minutes

Snyder Access

Access #210
Next access:
Wapsi
2.5 mi.
~1.5 hours

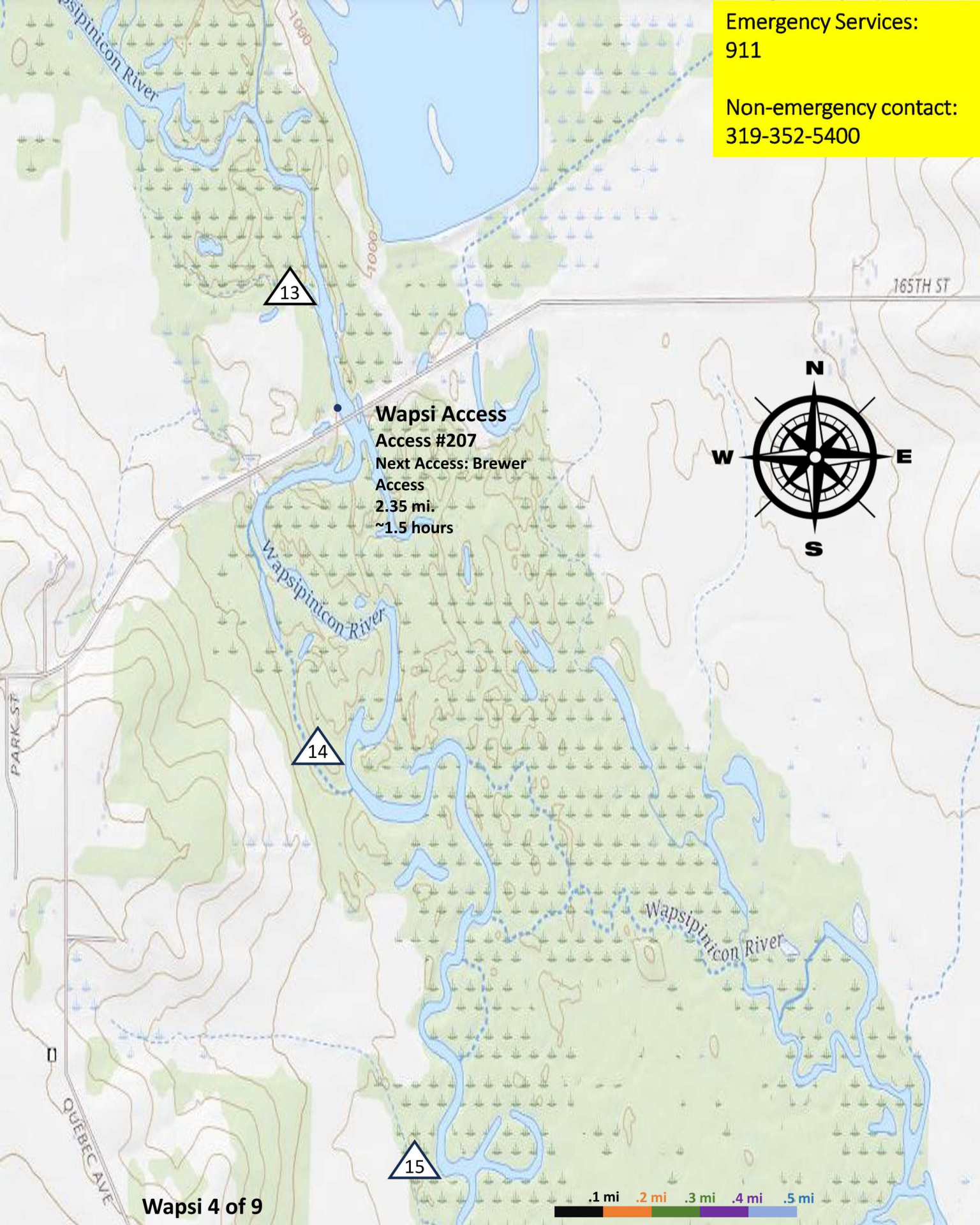
Emergency Services:
911

Non-emergency contact:
319-352-5400



Emergency Services:
911

Non-emergency contact:
319-352-5400



13

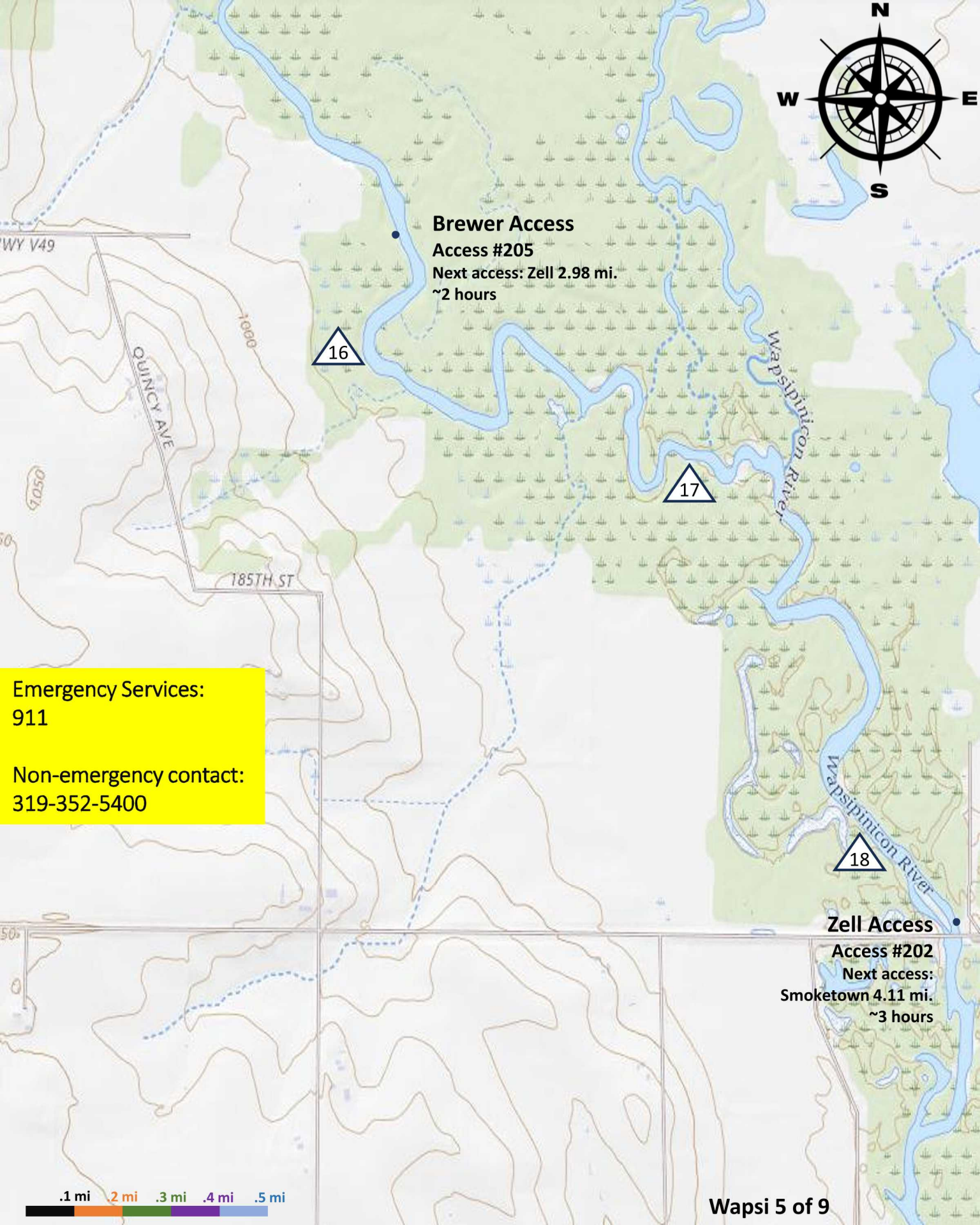
Wapsi Access
Access #207
Next Access: Brewer
Access
2.35 mi.
~1.5 hours



14

15





Brewer Access
Access #205
Next access: Zell 2.98 mi.
~2 hours

16

17

18

Zell Access
Access #202
Next access:
Smoketown 4.11 mi.
~3 hours

Emergency Services:
911
Non-emergency contact:
319-352-5400



Emergency Services:

911

Non-emergency contact:

319-352-5400



19

20

21

22

SABLE AVE

TARA AVE

190TH ST

198TH ST

IOWA

.1 mi .2 mi .3 mi .4 mi .5 mi

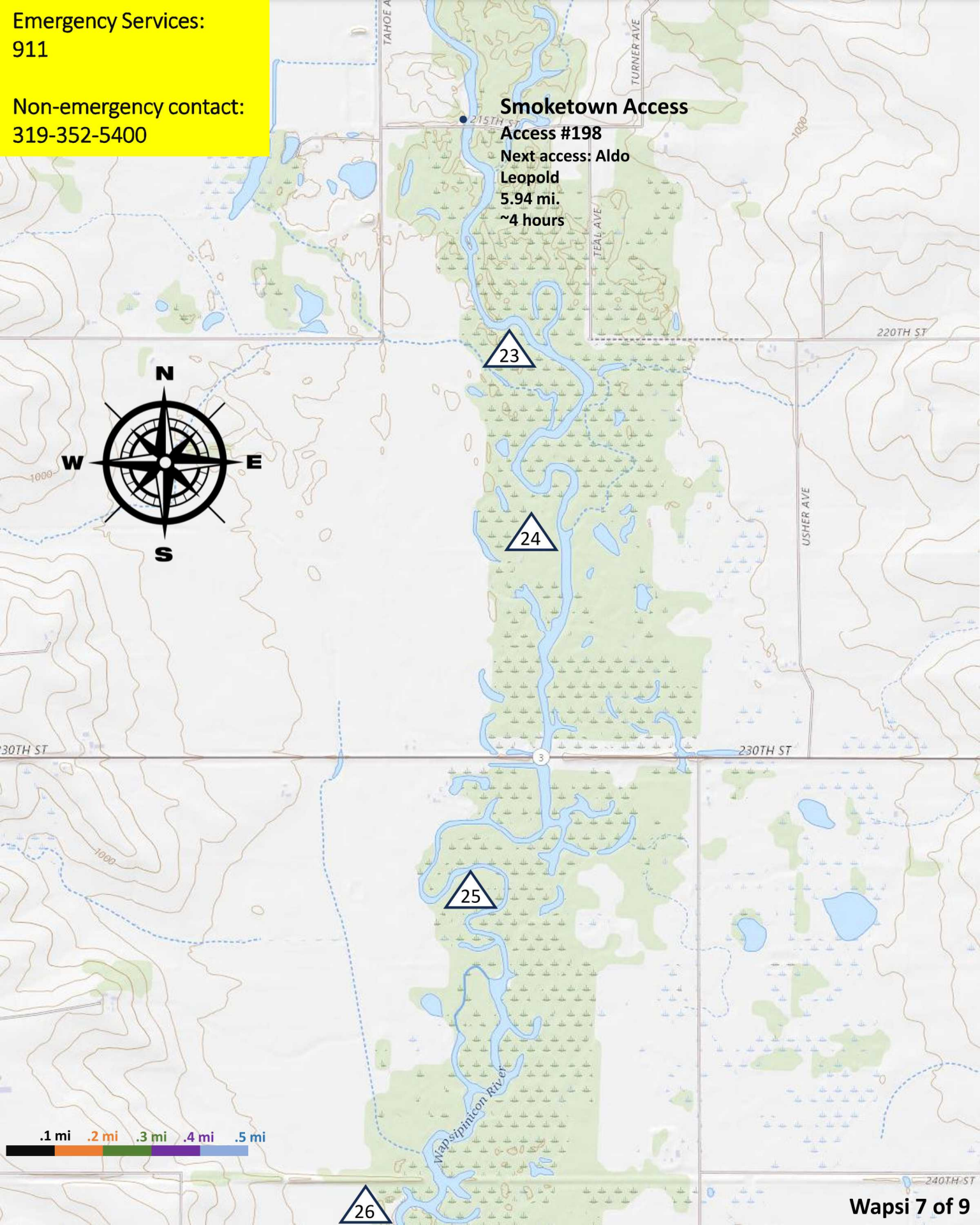


Emergency Services:
911

Non-emergency contact:
319-352-5400

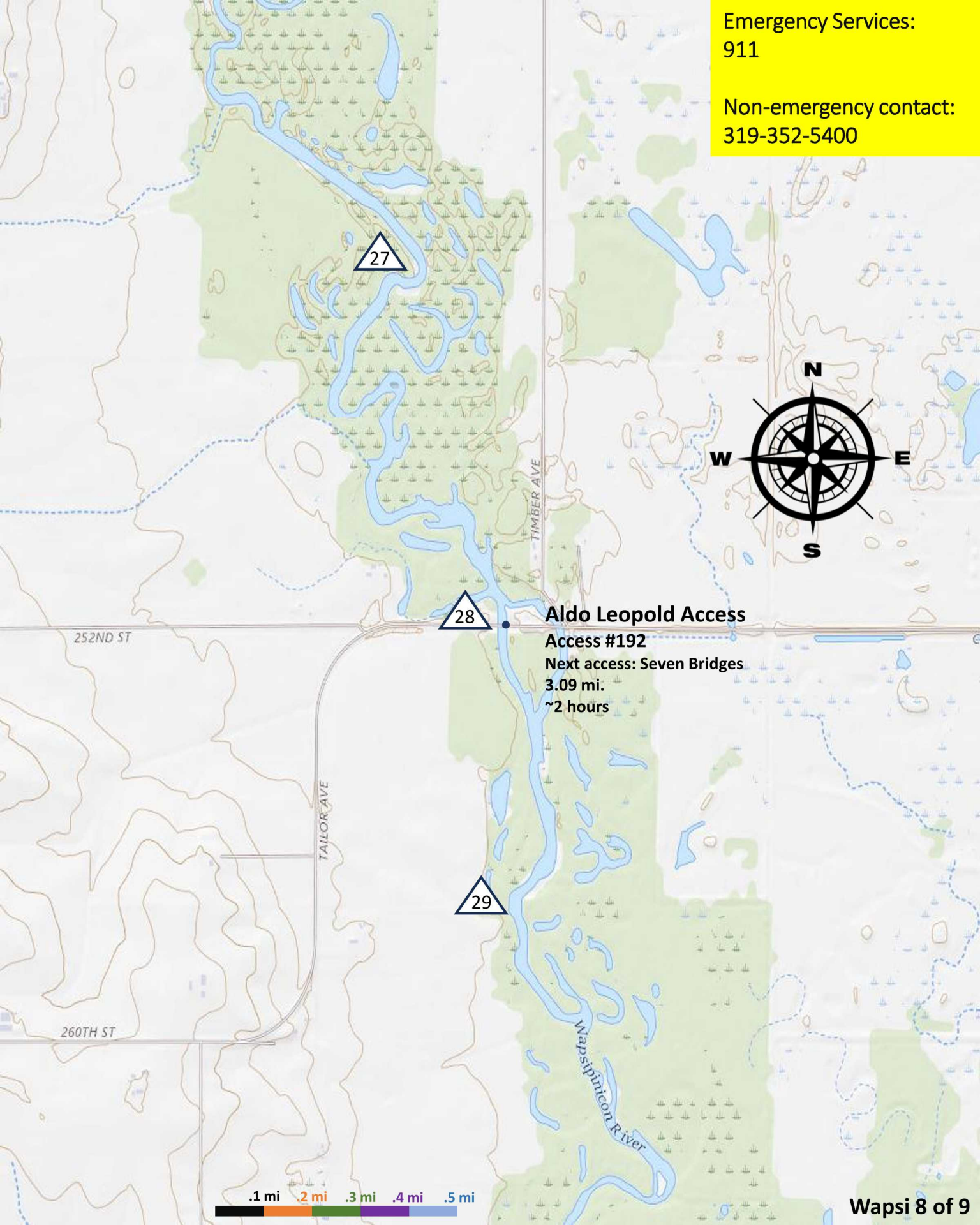
Smoketown Access

Access #198
Next access: Aldo Leopold
5.94 mi.
~4 hours



Emergency Services:
911

Non-emergency contact:
319-352-5400



Aldo Leopold Access
Access #192
Next access: Seven Bridges
3.09 mi.
~2 hours





Bremer County Nature Alliance
(319) 882-4742
conservation@butler-bremer.com



30

31

Seven Bridges
Access #190

32

270TH ST

33

34

34.3

Emergency Services:
911

Non-emergency contact:
319-352-5400

